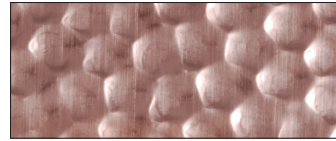
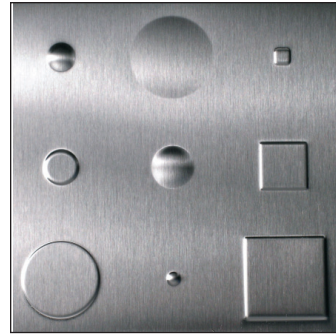


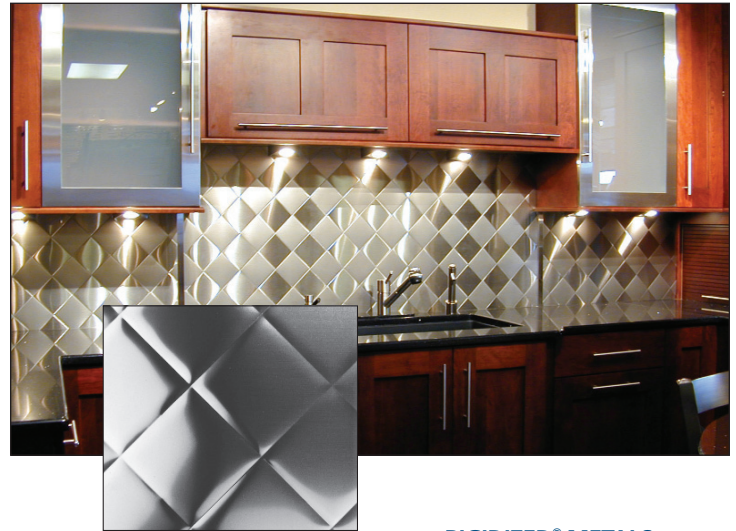
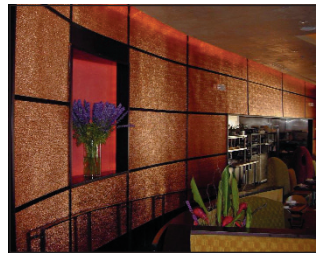
RIGIDIZED® METALS



BACKSPASHES



COUNTERTOPS AND FLOORING



THE VALUE ADDED PROCESS OF TEXTURIZING OR "RIGIDIZING"

Whether you're looking for custom backsplashes, countertops, tiles or switch plates, Rigidized® metal products can help you design spaces that make a statement about you! Our products add that perfect accent to any room. Rigidized® metals are used for countertops, walls, floors, ceilings, backsplashes, range hoods and countless applications where metallic beauty and long-term durability are important.

DRAMATIC METAL FINISHES INCLUDE:

- powder coated and highlighted stainless steel.
- stunning colored stainless steel.
- low reflectivity matte finish stainless steel.
- "coined" linen, squares and sand-tex stainless steel.
- vibration non-directional polish stainless steel.
- random swirl stainless steel.
- bead blasted stainless steel.

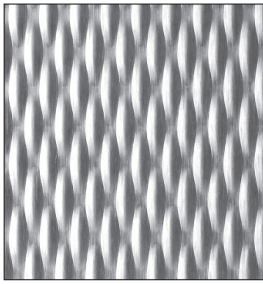
DEEP TEXTURED "RIGIDIZED" METALS:

- defy dents due to increased impact resistance.
- resist scratches - reduced surface contact area results in fewer scratches.
- save money - increased durability provides long term cost savings.
- save weight - increased strength allows in the use of lighter gauges.
- control reflections - patterns dissipate light and eliminate glare.

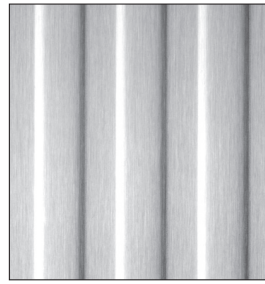
RIGIDIZED® METALS are created by a unique process which enhances the durability and beauty of flat metals. The Rigidized Process can be applied to ALL METALS including:

- STAINLESS STEEL
- COPPER
- ALUMINUM
- BRASS
- TITANIUM
- BRONZE
- STEEL
- GALVANIZED
- PERFORATED
- GALVANNEALED

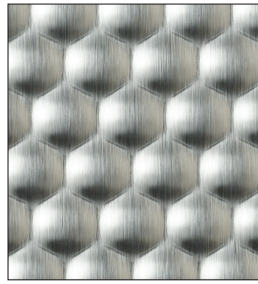
STANDARD PATTERNS



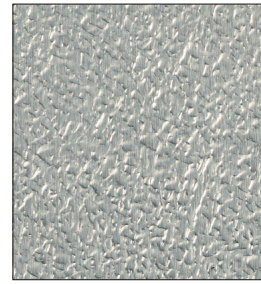
■ 5.WL *



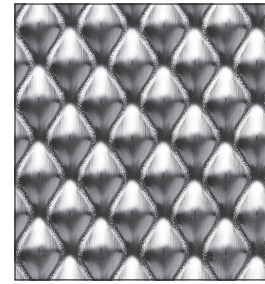
■ 2.FL



■ 6.HC



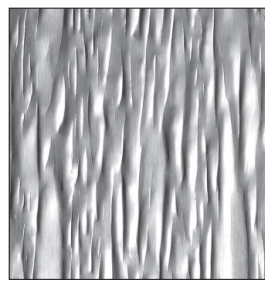
■ 1.SLG



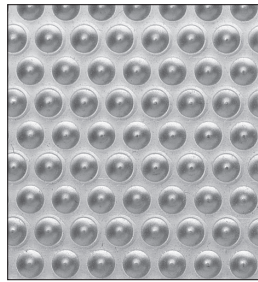
■ 6.WL *



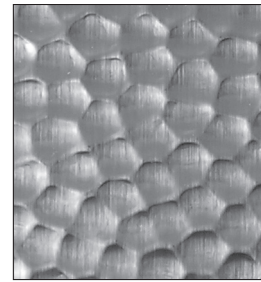
■ 6.SL



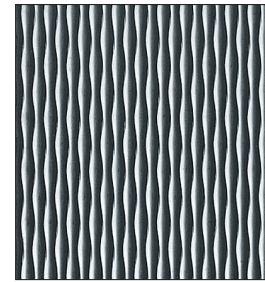
■ 1.CS



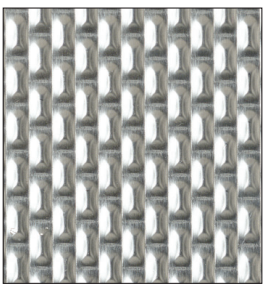
■ 7.DL



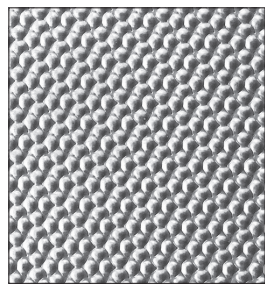
■ 1.HM



■ 2.WL *



■ 4.LB



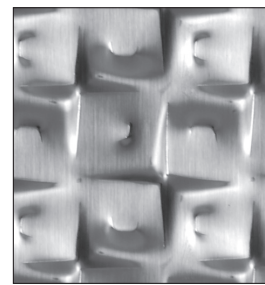
■ 3.ND



■ RSS 3



■ RTP



■ 1.RL



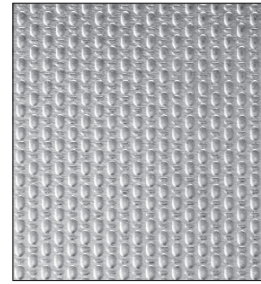
■ 60.LTH



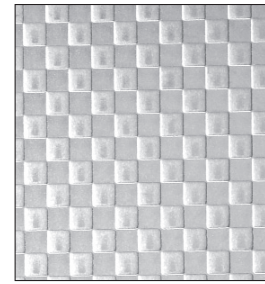
■ 1.NA *



■ SAND-TEX



■ LINEN



■ SQUARES



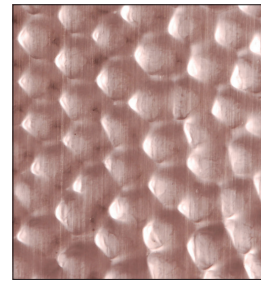
RB.4 * .875" FLAT TOP



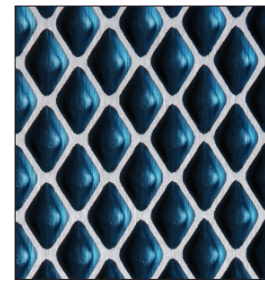
RB.2 * .750" DOME TOP



DELAWARE IN BLACK



■ 1.HM IN COPPER



MIDDLESEX IN BLUE MIRROR

ALL PATTERNS available in any METAL